



**NAPPO**

North American Plant Protection Organization

Organización Norteamericana de Protección a las Plantas

**MEXICO - USA - CANADA**

# Progress Report 2017

## Expert Group on Likelihood of Establishment

Guidance on the evaluation of likelihood of establishment in pest risk analysis for quarantine pests

**Christina Devorshak**

USDA-APHIS-PPQ-Science and Technology

NAPPO Expert Group member

41va Reunión Anual de la NAPPO / 41st NAPPO

Annual Meeting

# 2016-17 NAPPO Expert Group Members



Robert Favrin - **Chair**  
Katharine Church  
CFIA  
Canada



Christina Devorshak  
Yilmaz Balci  
APHIS-PPQ  
Jim Cranney  
Industry  
USA



Xotchil Aideé  
Campuzano Martínez  
SENASICA  
Alejandra Elizalde  
Industry  
Mexico

# Expert Group on Likelihood of Establishment

## Objectives

1. Provide *harmonized guidance* on the evaluation of likelihood of establishment when conducting a pest risk analysis
2. Review and discuss national as well as regional guidance to evaluate likelihood of establishment for a pest
3. Describe key criteria that can be used to evaluate likelihood of establishment

# Expert Group on Likelihood of Establishment

## **Final product**

Develop a *Discussion Document* on this topic that provides:

- A discussion concerning the interpretation of existing guidance available in current standards on pest risk analysis (PRA) – especially ISPM 11
- Examples that illustrate the different approaches when evaluating likelihood of establishment

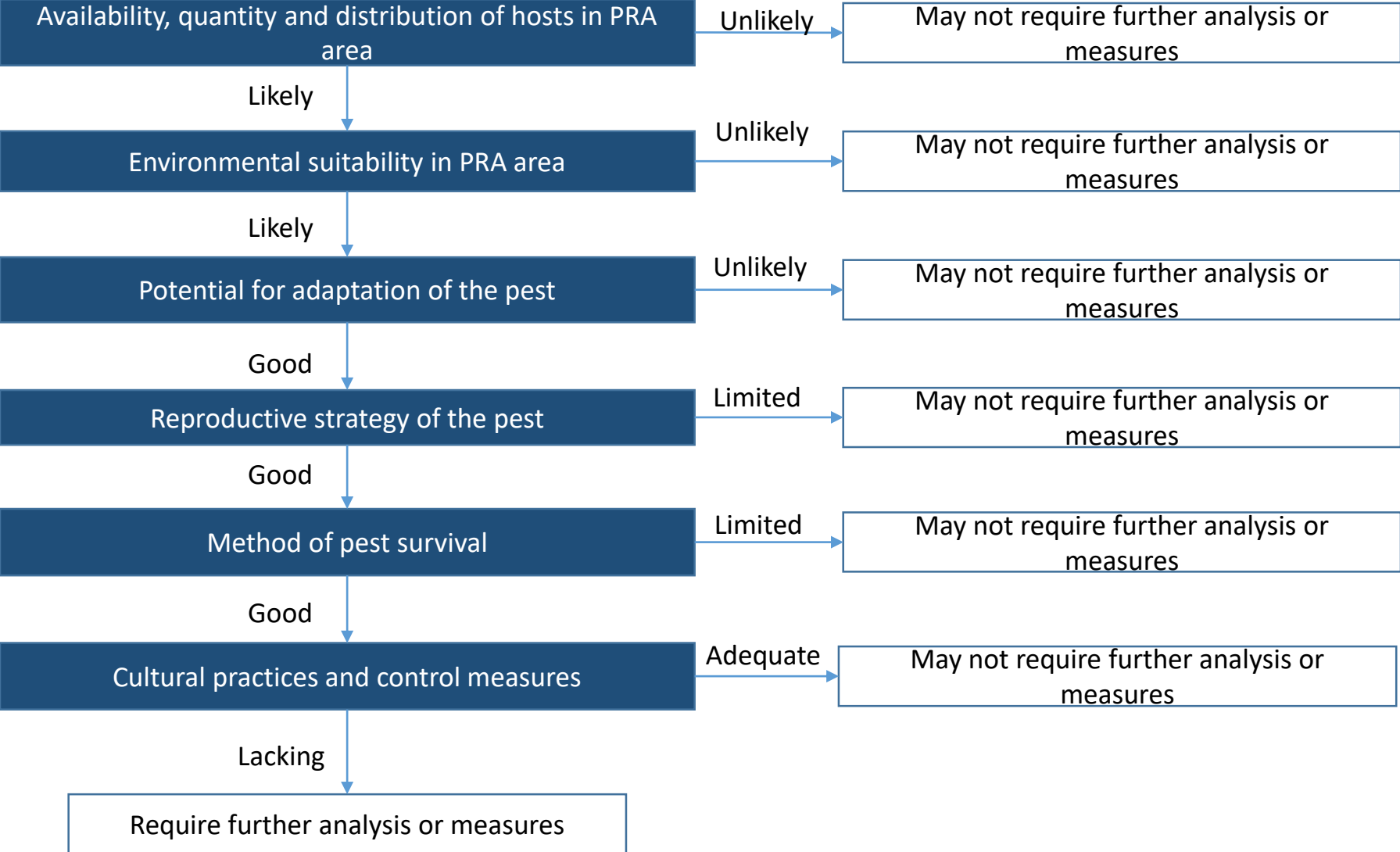
# Progress during 2017

- EG worked “virtually”
- Completed review of existing guidance (e.g. ISPM 11) and agreed that international standards provide sufficient general guidance
- Finalized document in early spring 2017
- Document sent for country consultation (April-May, 2017)
- Comments reviewed and document finalized (Sept. 2017)
  
- Approach -> focus on interpretation of guidance using pest-specific examples for the four main likelihood of establishment elements (Environment, Hosts, Cultural practice/controls, Biology)
- This document is aimed at *IMPLEMENTATION* of existing guidance

# Some issues related to LoE:

- Guidance in standards is very general
  - Example: Climate should be considered, but standards don't provide explicit information on how climate may affect establishment
- “Introduction” of a pest requires entry AND establishment
  - Entry of a pest may sometimes be considered/interpreted to automatically lead to establishment
- Likelihood of establishment may change depending on how the commodity is used
  - Example: likelihood of establishment of a pest on a commodity for consumption may change if that same commodity is planted

# Likelihood of establishment elements



# Conclusions and next steps

What remains to be done?

- Document approved by the NAPPO Executive Committee approval (at Annual Meeting)
- Upload NAPPO document to NAPPO website
- Provide document to IPPC for consideration when IPPC undertakes work on Likelihood of Establishment
- Promote the document within NAPPO region and with partners outside of NAPPO region