



Canadian Food  
Inspection Agency

Agence canadienne  
d'inspection des aliments

# Canada Report: 2017 NAPPO Annual Meeting Merida, Mexico October 16 – 19, 2017

**Marie-Claude Forest**  
**NAPPO Executive Committee Member for Canada**  
**Canadian Food Inspection Agency**



Canada

# Outline

- Government of Canada and CFIA Priorities
  - Plant Health Initiatives
  - Program Updates
  - Pest Reports
- 

# Priorities

## Canada

- Deeper trade relationships
  - Emerging and established markets e.g. China and India
  - Negotiating beneficial trade agreements
- Science and evidence-based policy
- Results and delivery approach
- Climate change
- Investment in infrastructure

## CFIA

- Modern regulatory tool kit
- Integrated Risk Management
- Consistent and efficient inspections
- Digital first
- Global leader

# Digital First: CFIA Electronic Export System

- Digital First: Key component of the CFIA Modernization Agenda and work is being done on the Electronic Service Delivery Platform (ESDP).
- *My CFIA* - a new digital platform that provides industry with a secure, innovative suite of online services, including access to phytosanitary certificates.
- Late Fall 2017: Phytosanitary certificates will be automated through *My CFIA*.
- More details to be presented in the Electronic Phytosanitary Certification Expert Group presentation.

# Global Leader

- Continued support for the IPPC.
- Funding to support the IPPC - \$270,000
  - May 2017 Standards Committee meeting
  - Expert Working Group on *Authorization of entities to perform phytosanitary actions* – June 12 -16, 2017, Ottawa, Canada.
  - IPPC manual for pest free areas and areas of low pest prevalence.
- In-kind contributions
  - e-Phyto 100% (Shane Sela - Jan 2016 – March 2018)
- IPPC bodies - Membership
  - Bureau (Marie-Claude Forest)
  - Standards Committee (Rajesh Ramarathnam)
  - Implementation and Capacity Development Committee (Dominique Pelletier)

# Plant Health Initiatives



# Plant and Animal Health Strategy (PAHS)

Multiple engagement opportunities brought partners together to co-create the Strategy, leading to a shared vision for plant & animal health

Endorsed by Federal, Provincial, and Territorial Ministers of Agriculture - July 21, 2017

## Areas for action

Coordination  
through Partnership

A System Founded  
on Prevention...and  
Defended through  
Effective Response  
and Recovery

Collection, Analysis  
and Sharing of  
Information

Enabling Desired  
Behaviours

## Taking action will support key goals


Economic  
Growth

Innovation

Public  
Trust

Risk  
Management

# PAHS: Next Steps

- Set up Implementation Coordinating Councils
  - Launch Short Term Activities
  - Identify Roles, Resources & Contributions
- 



# Sea Containers



- Shipping containers used between many countries and for many different commodities.
- Contamination with plant pests on the inside and on the outside of the container (e.g. weed seeds, snails, insects).
- The CFIA co-leads the North American Sea Container Initiative Working Group.
- 
- Goal: To raise awareness about the risks and collaborate with industry stakeholders and trading partners to minimize pest movement by sea containers.

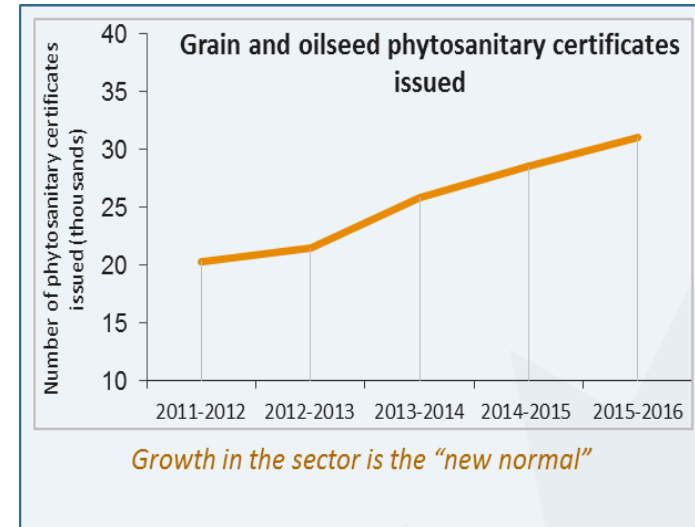
# e-Commerce



- Internet and mail order catalogue sales of regulated pests and potential invasive alien species including plants, molluscs and insects.
- Education and awareness campaign for the import and distribution of invasive species through the e-Commerce pathway is key.
- Inform Canadian importers and exporters of invasive pests, import regulations and requirements in Canada and other countries.
- Work internationally (e.g., Australia, New Zealand, U.S.).

# Recognition of Export Grain Analysis by Authorized Laboratories (REGAL) Program

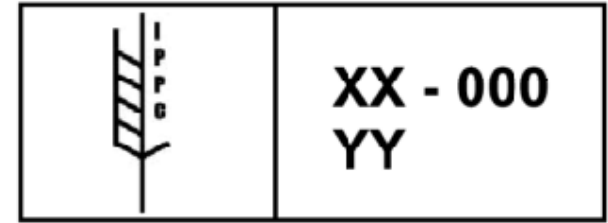
- The CFIA is responsible for phytosanitary certification of grain export shipments.
- Increased demand for laboratory testing for phytosanitary certification: CFIA launching a new alternative service delivery program - **REGAL**.
- REGAL will allow exporters to have their grain shipments tested by authorized laboratories. Similar to canary seed to Mexico model.
- Grain exports to India and China to be tested for weed seeds, soil and/or live insects, according to phytosanitary import requirements.
- CFIA will provide the testing protocol, program requirements, oversee REGAL, and responsible for phytosanitary certification.



# Program Updates



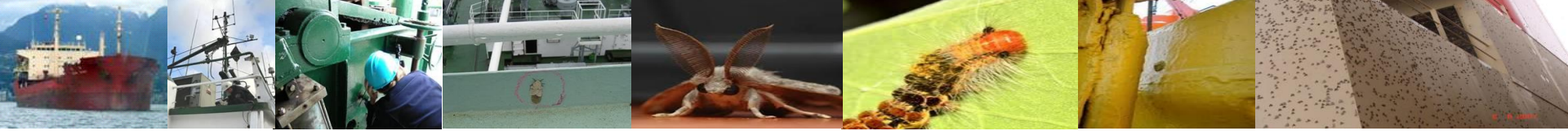
# ISPM 15 Compliance



- CFIA works with Alternative Service Delivery (ASD) organizations regarding manufacture of ISPM 15 compliant wood packaging material (WPM) in >400 registered establishments.
- CBSA inspects WPM entering Canada.
  - Inspection focused on WPM associated with imported sea containers.
  - Since 2009 compliance rates have varied from 95% to 98% compliant. Non-compliant containers are ordered returned to origin.
- CFIA recently re-designed ship-borne dunnage inspection program.
  - Permits required for discharge of ISPM 15 dunnage at Canadian marine ports.
  - Permit holder required to have a preventative control program in place.
  - Preventative control program audited by the CFIA or CBSA.
  - Implementing this new program over the coming year.

# United States / Canada Greenhouse Certification Program (GCP)

- The GCP - updated voluntary export certification option for the shipment of greenhouse-grown plants between Canada and the United States.
- APHIS and CFIA jointly developed training units for GCP auditors to promote consistent, equivalent implementation and delivery of the GCP within and between Canada and the United States.
- CFIA just completed consultation on the administrative directive for the delivery of the GCP in Canada.
- Flowers Canada developing an end-user training program for participating facilities.



# AGM Vessel Certification Program

- High level of compliance with AGM requirements
  - Compliance has increased since 2012 and remains at a high level.
- Vessel certification program lowering the AGM risk to Canada.
- AGM continues to be detected on a small number of incoming vessels.

# Canadian Compliance Verification Inspection Summary

## Asian Gypsy Moth 2012-2017

	2012	2013	2014	2015	2016	2017
Regulated vessels visits	1623	1581	1558	1524	1615	1552
Certified vessel visits	1418	1489	1490	1476	1573	1508
Uncertified vessel visits	205	92	68	48	42	44
% of vessels arriving certified	87%	94%	96%	97%	97%	97%
Vessels inspected (uncertified + percentage of certified)	653	625	500	396	458	366
AGM detections (certified and uncertified)	32 (5% of inspected)	33 (5% of inspected)	39 (8% of inspected)	15 (4% of inspected)	3 (0.6% of inspected)	6 (1.6 % of inspected)





# On-going AGM Activities for Continuous Program Enhancement

- CFIA clarified with industry the requirement for AGM certificate for vessels bunkering in Korea.
- CFIA reviewing risk associated with AGM for Far North Canadian ports.
- As part of the NAPPO expert group on AGM – reviewing the specified risk periods in AGM regulated areas.
- Ongoing discussion with New Zealand - Ministry for Primary Industries (MPI):
  - NZ MPI - published the AGM vessel certification requirements in Craft Risk Management Standard on July 20, 2017. Implementation February 1, 2018.
  - Specify that inspection must occur during daylight hours on the same day as departure.
  - Canada-US-NZ meeting proposed for 2018 to further discuss alignment of program elements.

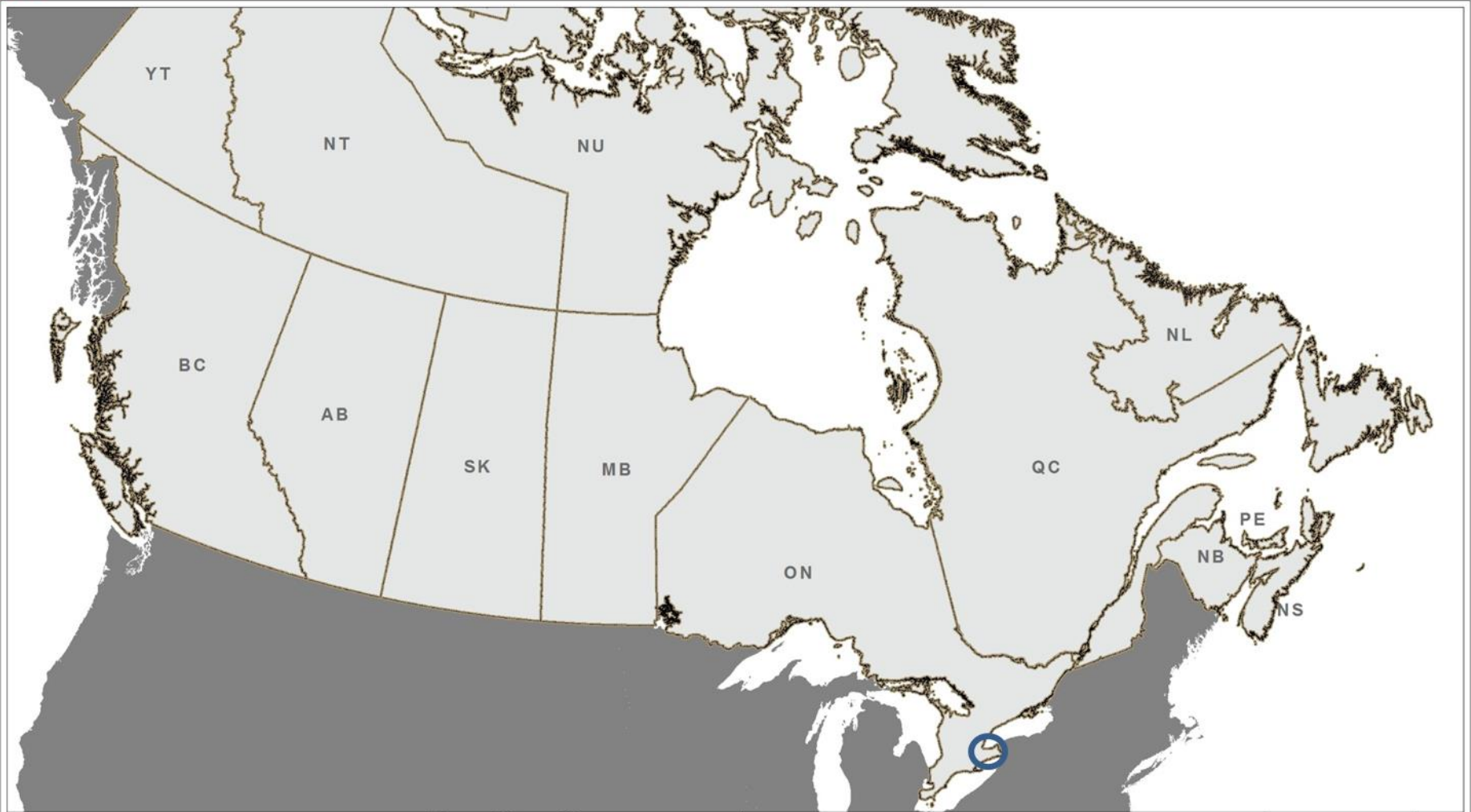
# Invasive Plants Program

- Under Canada's Plant Protection program.
- Nationally, prevent or limit introduction and spread of terrestrial plants that could threaten Canada's agriculture, forestry and environmental resources.
- Developed and implemented within last eight years.
- Invasive Plants Directive D-12-01.
  - <http://inspection.gc.ca/plants/plant-pests-invasive-species/directives/>
- Currently 20 plant species regulated under the *Plant Protection Act*
- *Arundo donax* will be added to list in January 2018 as per WTO notification.

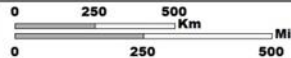
# Pest Status Update



# Rhagoletis cerasi – European cherry fruit fly



Produced by the Canadian Food Inspection Agency, Plant Health Surveillance Unit, Ottawa, Ontario. / Préparé par l'Agence canadienne d'inspection des aliments, Unité de surveillance phytosanitaire, Ottawa, Ontario. / WGS 1984 Web Mercator Auxiliary Sphere. / WGS 1984 Web Mercator (sphère auxiliaire).



Data Sources / Sources des données:  
© Gouvernement du Canada, © Statistics Canada, © ESRI and © DMTI Spatial Inc.

2017 | 09 | 29



# *Rhagoletis cerasi* (European Cherry Fruit Fly)



- Pest considered established in Ontario but not known to occur in the rest of Canada.
- Movement restrictions on fresh cherries from Ontario came into effect on June 1, 2017.
- European cherry fruit fly never been found in association with cherries in Canada; only in association with wild *Lonicera* (honeysuckle) in Ontario.

# Popillia japonica (Japanese beetle) – Vancouver, BC



Canadian Food  
Inspection Agency

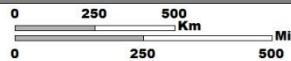
Agence canadienne  
d'inspection des aliments



Produced by the Canadian Food Inspection Agency, Plant Health Surveillance Unit, Ottawa, Ontario. /  
Préparé par l'Agence canadienne d'inspection des aliments, Unité de surveillance phytosanitaire, Ottawa, Ontario.

WGS 1984 Web Mercator Auxiliary Sphere.

WGS 1984 Web Mercator (sphère auxiliaire).



Data Sources | Sources des données:  
© Gouvernement du Canada, © Statistics Canada, © ESRI and/or © DMTI Spatial Inc.

2017 | 09 | 29

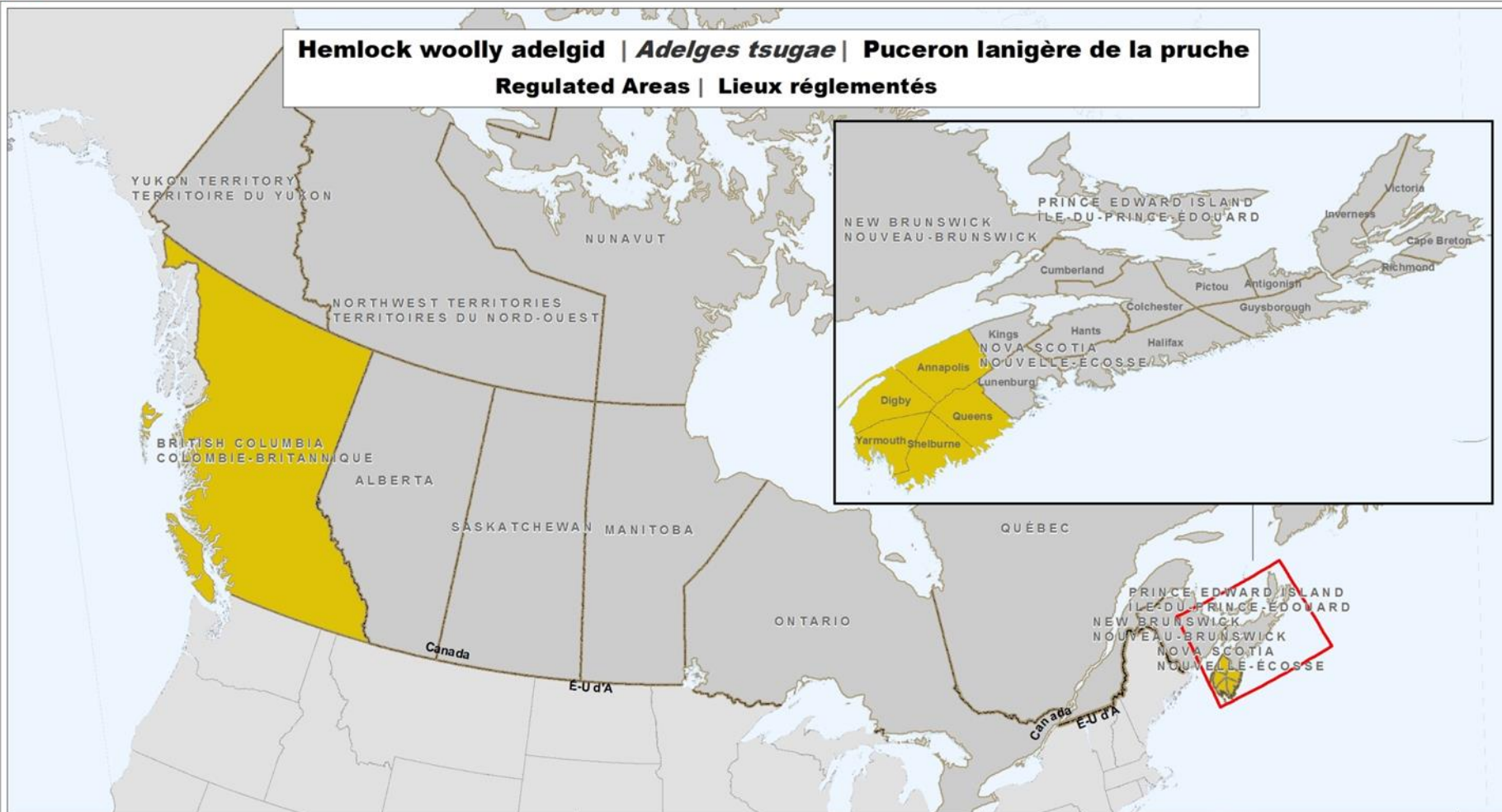


# *Popillia japonica* (Japanese beetle)



- On July 7, 2017 Japanese beetle detected within the City of Vancouver.
- First detection of the pest in British Columbia.
- Detection was made by the CFIA; during CFIA's annual surveillance for this pest.
- Delimitation surveys currently underway.
- British Columbia only province in Canada that is a pest-free area for Japanese beetle based on official surveys.

**Hemlock woolly adelgid | *Adelges tsugae* | Puceron lanigère de la pruche**  
**Regulated Areas | Lieux réglementés**



Produced by the Canadian Food Inspection Agency, Plant Health Surveillance Unit, Ottawa, Ontario. / Préparé par l'Agence canadienne d'inspection des aliments, Unité de surveillance phytosanitaire, Ottawa, Ontario. / WGS 1984 Web Mercator Auxiliary Spher. / WGS 1984 Web Mercator (sphère auxiliaire).

Data Sources | Sources des données:  
 © Gouvernement du Canada, © Statistics Canada, © ESRI and/or © DMTI Spatial Inc.



# Hemlock Wood Adelgid



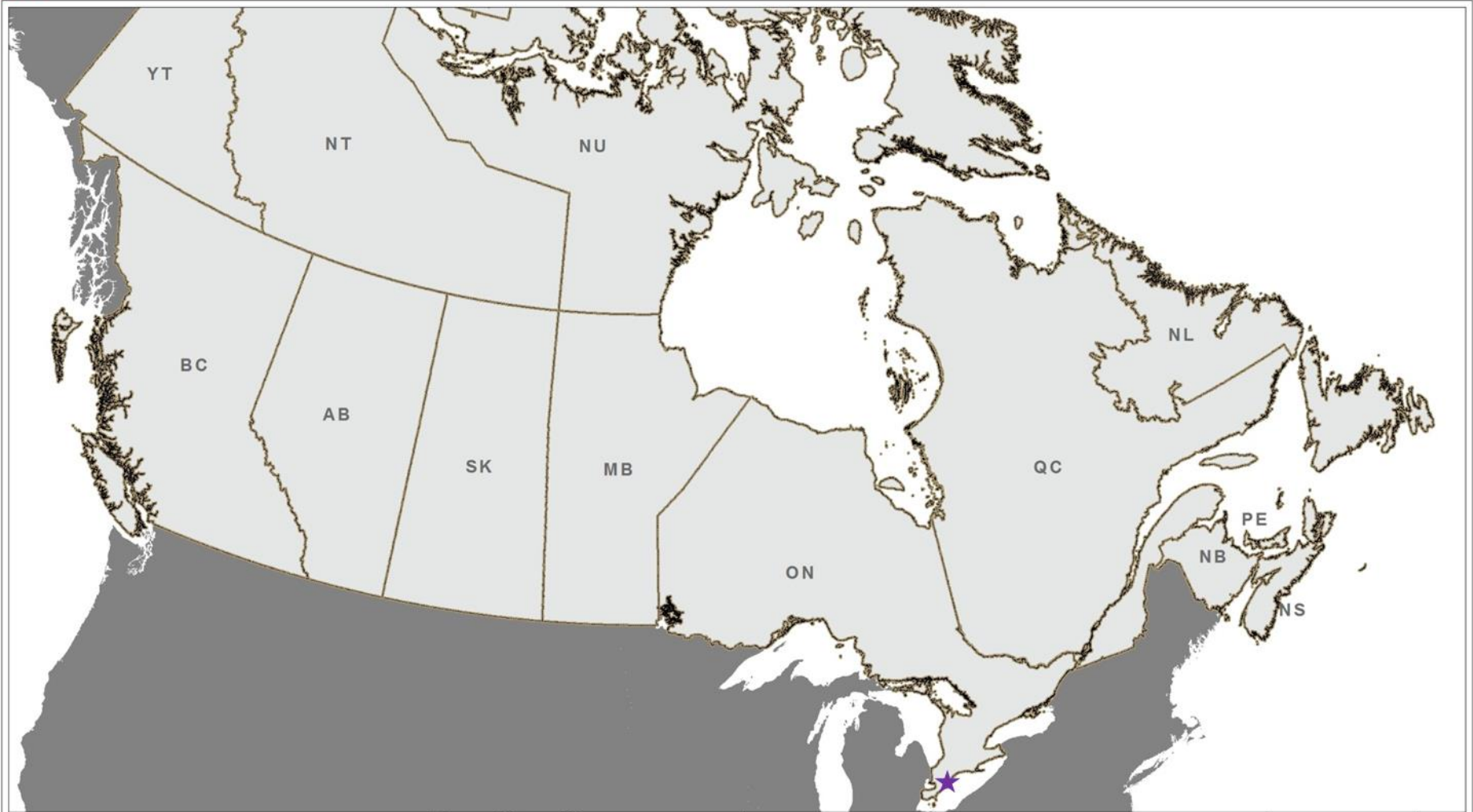
- HWA distribution:
  - 1920s : First reported in Western Canada (BC).
  - 2011 and 2013: Detected and eradicated in Ontario.
  - 2017: Detected in NS in five counties.
- Regulated zone will include all infested counties in NS and the entire province of BC.
  - Regulated articles may only move out of the regulated area if they have been inspected by the CFIA and a movement certificate has been issued.

# Kudzu

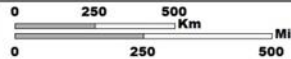


Canadian Food  
Inspection Agency

Agence canadienne  
d'inspection des aliments



Produced by the Canadian Food Inspection Agency, Plant Health Surveillance Unit, Ottawa, Ontario. Préparé par l'Agence canadienne d'inspection des aliments, Unité de surveillance phytosanitaire, Ottawa, Ontario. WGS 1984 Web Mercator Auxiliary Sphere. WGS 1984 Web Mercator (sphère auxiliaire).



Data Sources : Sources des données:  
© Gouvernement du Canada, © Statistique Canada, © ESRI and/or © DMTI Spatial Inc.

2017 | 09 | 29



# Kudzu Eradication in Canada



- Highly invasive aggressive vine native to Asia that can grow up to 30 cm per day, smothering native species.
- Only one known site in Canada, detected in 2009.
- Site located on a steeply sloped 0.5 hectare environmentally sensitive area in Southwestern Ontario.
- The CFIA and the Province of Ontario have partnered to respond to this pest plant incursion.
- A kudzu eradication plan was initiated in September 2015 under a formal 10 year agreement.
- Multi-phased plan includes the removal of the kudzu and revegetation of the site in an effort to minimize erosion to the slope.

# Kudzu Eradication Plan



**July 2016: Zone 3A  
treated and crowns  
flagged**



**September 2016:  
Zone 3A**



**Plantings at  
top of zone 1A**



**Thank you!**

**Questions/Comments**

