



Single Window Environment

S.P. Sahu
World Customs Organization



Outline

- **WCO Instruments for Supply Chain Security & Facilitation**
- **Coordinated Border Management**
 - **Single Window Environment as enabler**
- **WCO Data Model as kernel of the Single Window**
 - **GOVCBR – the new EDIFACT message for Single Window**
- **Lessons from E-Cert Project**



Some Relevant WCO Instruments

- **Harmonized system**
- **Revised Kyoto Convention**
- **SAFE Framework of Standards**
- **Integrated Supply Chain Management Guidelines**
- **WCO Data Model V3.0 (X-Border Domain)**
- **Time Release Study**
- **UCR**



What is a Single Window?

*"...a Single Window is...a facility that allows parties involved in trade and transport to lodge standardized information and documents [once] with a single entry point to fulfill all import, export, and transit-related regulatory requirements."**

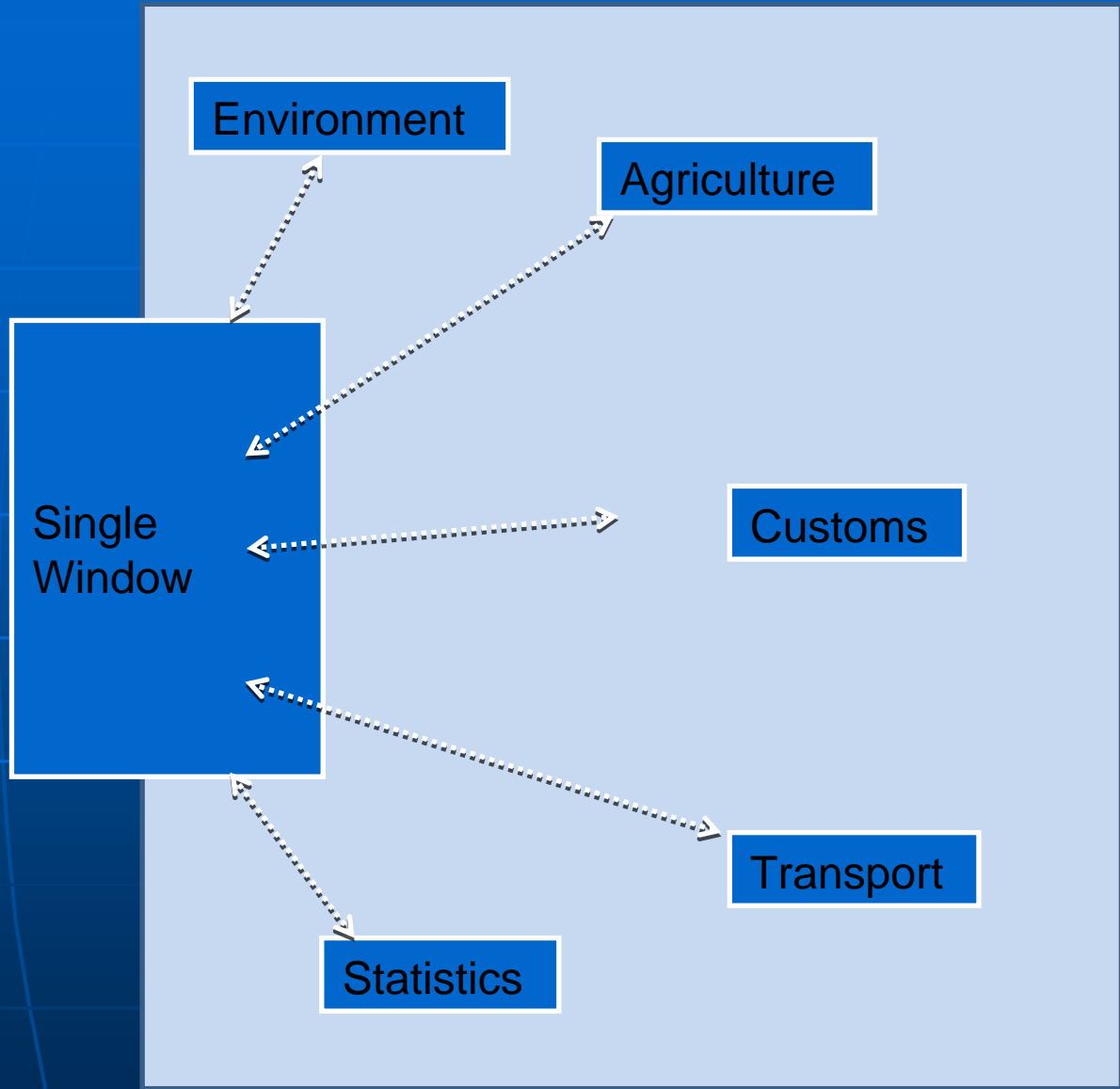
*UN ECE Recommendation 33,
Recommendations and Guidelines on Establishing
a Single Window

- It is not always a single system; it is an 'environment'.
- It is an 'intelligent' facility (perhaps, a network of co-operating facilities)
- Information submitted is mainly electronic
- Requires 'soft issues' to be tackled first before considering the physical and virtual Single Window
- Can be national or international



The Single Window will allow the transmission of one standard set of data, distributed and used by all agencies

Business Community (B2G) or Other Government



Data source can be another government's Single Window, G2G



C21 Building Blocks

Etc. Etc..

Customs-Trade Partnership

Globally Networked Customs

Coordinated Border Management

(Only a subset of components are depicted below)

Working Agreements

Agreed Business Process Concept

Agreed Service Catalogue

Established Legal Basis

Soft

One-stop Shop

Juxtaposed Front offices / Back offices

Integrated Service Windows

Shared Operational Controls

Physical

Single Window Environment

Harmonized eForms / Electronic Messages

Common Data Model

Common Portal Services

Executing Interagency Business Processes

Collectively achieved Service Levels

Virtual



Single Window Questions

- **What are the transactions** covered by a Single Window?
 - Data **reuse** between Government Agencies
 - Data **reuse** within a supply-chain cycle
- How does **single submission** work?
 - Or how do we enable data re-use?
- One system or collection of co-operating facilities & networks?
- Legal Issues

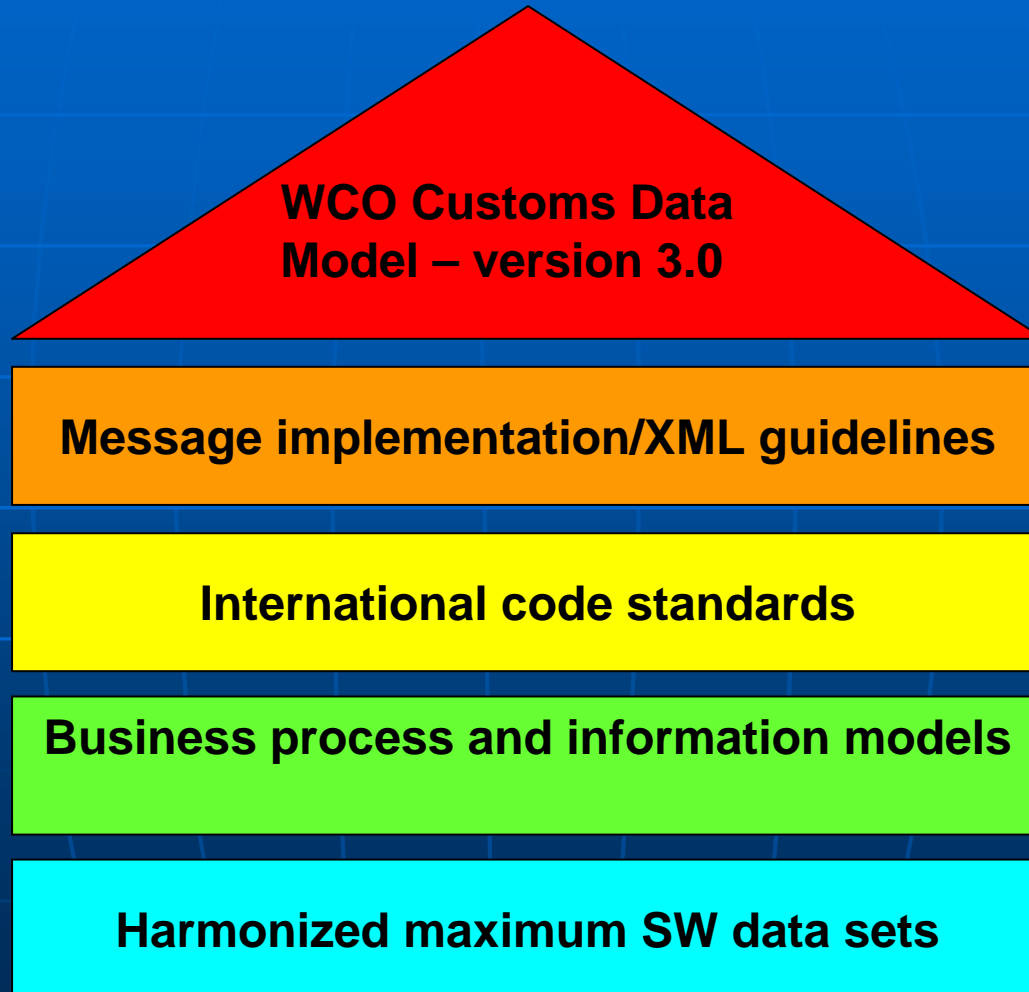


Single Window Services

- **Information Services**
 - Regulatory Information
 - Admissibility, tariff structure
 - Specific to Commodity and the Trading context
 - Data structures
 - Electronic messaging guidelines/ Snippets/ e-forms
 - Operational Information e.g. Transactional Status
- **Messaging Services**
 - Registering Business Profiles & Business Collaboration
 - Parsing, Translating, Routing, Delivering and Audit-logging
- **Business Computing Services**
 - Computing duties, taxes, fees, entitlements
 - Lodging (and responding to) declarations, reports, results
 - Ledgering, accounting
- **Application-to-Application Services**
 - One government agency to another (loose coupling through web-services)

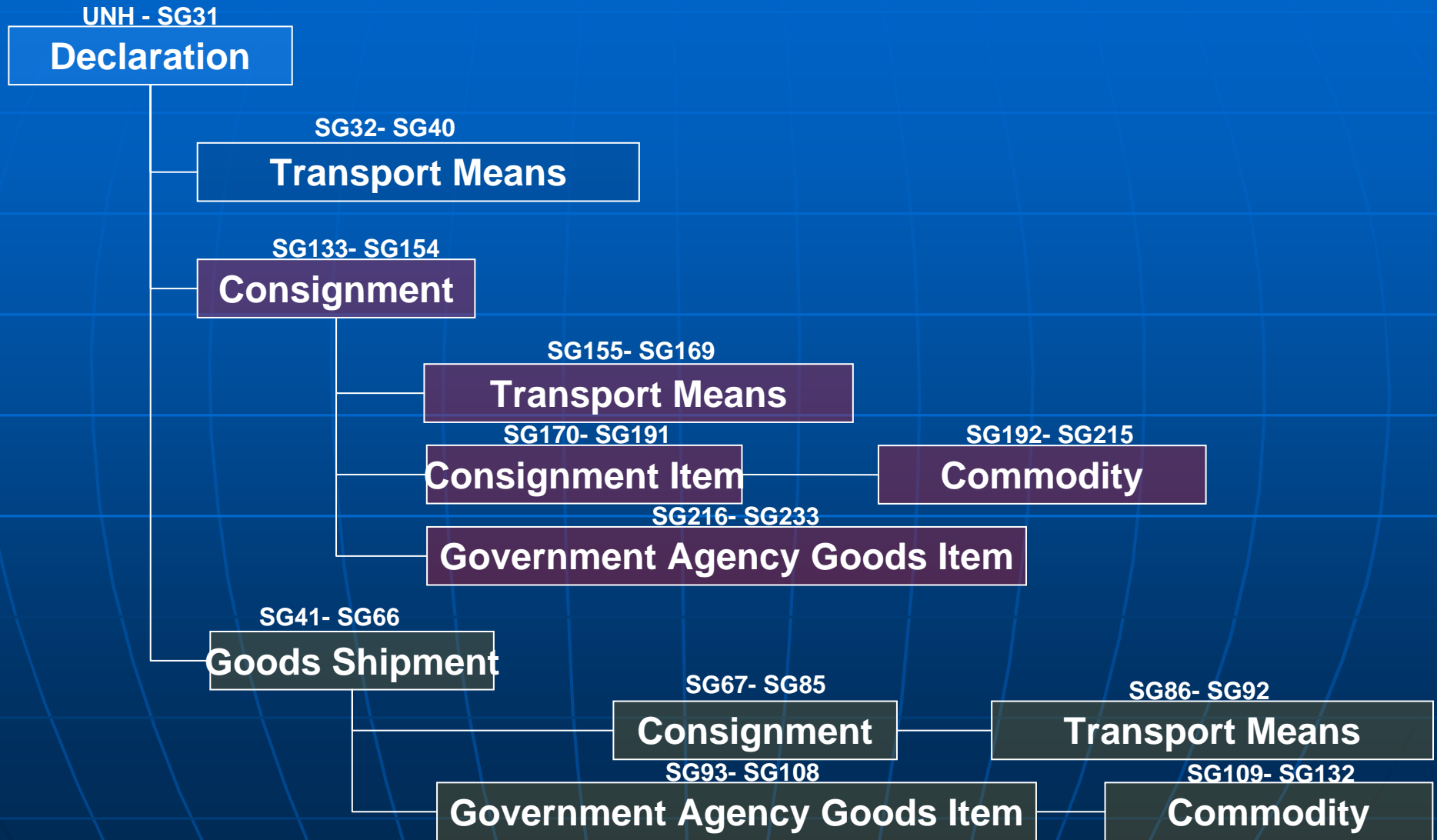


WCO Data Model V3.0





STRUCTURE OF GOVCBR*



*Technically assessed and approved as a UN standard message



Single Window and WCO DM

- WCO DM to be considered as the authoritative source of B2G and G2G data
- Version 3 is the initial Single Window version
- Administrations contributed participating agencies' Single Window requirements
- Representatives of participating agencies took part in deliberations directly or indirectly
 - Transport
 - Maritime/IMO, IATA, IRU
 - Agriculture
 - Environment (Basel Convention)
 - Sanitary- Phytosanitary
 - E-Cert



E-Cert & Single Window

- G2G Assurance on the meeting of importing country's regulatory requirements
- E-Cert in a Single Window Environment
 - Single Window can provide the messaging function
 - Transmission to an importing administration
 - Tracking from production to verification
 - Utilization of E-Cert in import admissibility
 - Track & trace
- GOVCBR can provide E-Cert References
 - Can GOVCBR be mapped to E-Cert Data
- Single Window needs to cover
 - All regulatory aspect of the product life-cycle
 - Not just cross-border regulatory processes



THANK YOU

sp.sahu@wcoomd.org

Phone: +32 2209 9321

www.wcoomd.org